

**FBXL19 Antibody (C-term)**  
**Affinity Purified Rabbit Polyclonal Antibody (Pab)**  
**Catalog # AP18447b****Specification**

---

**FBXL19 Antibody (C-term) - Product Information**

Application	WB,E
Primary Accession	<a href="#">Q6PCT2</a>
Other Accession	<a href="#">Q6PB97</a> , <a href="#">NP_001093254.2</a>
Reactivity	Human
Host	Rabbit
Clonality	Polyclonal
Isotype	Rabbit IgG
Antigen Region	543-570

**FBXL19 Antibody (C-term) - Additional Information****Gene ID** 54620**Other Names**

F-box/LRR-repeat protein 19, F-box and leucine-rich repeat protein 19, FBXL19, FBL19

**Target/Specificity**

This FBXL19 antibody is generated from rabbits immunized with a KLH conjugated synthetic peptide between 543-570 amino acids from the C-terminal region of human FBXL19.

**Dilution**

WB~~1:2000

E~~Use at an assay dependent concentration.

**Format**

Purified polyclonal antibody supplied in PBS with 0.09% (W/V) sodium azide. This antibody is purified through a protein A column, followed by peptide affinity purification.

**Storage**

Maintain refrigerated at 2-8°C for up to 2 weeks. For long term storage store at -20°C in small aliquots to prevent freeze-thaw cycles.

**Precautions**

FBXL19 Antibody (C-term) is for research use only and not for use in diagnostic or therapeutic procedures.

**FBXL19 Antibody (C-term) - Protein Information****Name** FBXL19**Synonyms** FBL19

**Function** Substrate-recognition component of the SCF (SKP1-CUL1-F-box protein)-type E3 ubiquitin ligase complex that plays a role in different processes including cell migration, cell proliferation or cytoskeletal reorganization (PubMed:[24684802](#), PubMed:[29522376](#)). Mediates RHOA ubiquitination and degradation in a ERK2-dependent manner (PubMed:[23871831](#)). Induces RAC1 and RAC3 degradation by the proteasome system and thereby regulates TGF $\beta$ 1-induced E-cadherin down-regulation and cell migration (PubMed:[23512198](#), PubMed:[24684802](#)). Also mediates ubiquitination and degradation of IL-33-induced receptor IL1RL1 and subsequently blocks IL-33-mediated apoptosis (By similarity). Within the nucleus, binds to DNA containing unmethylated cytidine-phosphate- guanosine (CpG) dinucleotides (PubMed:[29276034](#)). Recruits CDK-mediator to chromatin and targets CDK8 to promoters of silent developmental genes leading to induction of these genes during cell differentiation. In addition, plays a critical role in the recruitment of RNF20 to histone H2B leading to H2B mono-ubiquitination (By similarity).

#### Cellular Location

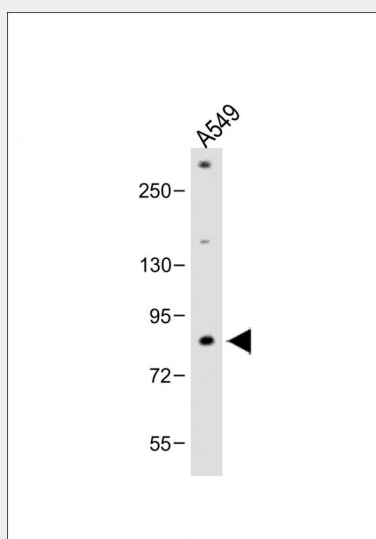
Cytoplasm. Nucleus

#### FBXL19 Antibody (C-term) - Protocols

Provided below are standard protocols that you may find useful for product applications.

- [Western Blot](#)
- [Blocking Peptides](#)
- [Dot Blot](#)
- [Immunohistochemistry](#)
- [Immunofluorescence](#)
- [Immunoprecipitation](#)
- [Flow Cytometry](#)
- [Cell Culture](#)

#### FBXL19 Antibody (C-term) - Images



Anti-FBXL19 Antibody (C-term) at 1:2000 dilution + A549 whole cell lysate Lysates/proteins at 20  $\mu$ g per lane. Secondary Goat Anti-Rabbit IgG, (H+L), Peroxidase conjugated at 1/10000 dilution. Predicted band size : 76 kDa Blocking/Dilution buffer: 5% NFDm/TBST.

#### FBXL19 Antibody (C-term) - Background

Members of the F-box protein family, such as FBXL19, are characterized by an approximately 40-amino acid F-box motif. SCF complexes, formed by SKP1 (MIM 601434), cullin (see CUL1; MIM 603134), and F-box proteins, act as protein-ubiquitin ligases. F-box proteins interact with SKP1 through the F box, and they interact with ubiquitination targets through other protein interaction domains (Jin et al., 2004 [PubMed 15520277]).[supplied by OMIM].

#### **FBXL19 Antibody (C-term) - References**

Martin, J., et al. Nature 432(7020):988-994(2004)  
Katoh, M., et al. Int. J. Mol. Med. 14(6):1109-1114(2004)  
Jin, J., et al. Genes Dev. 18(21):2573-2580(2004)

#### **FBXL19 Antibody (C-term) - Citations**

- [SCF FBXW17 E3 ubiquitin ligase regulates FBXL19 stability and cell migration](#)
- [A novel function of AAA-ATPase p97/VCP in the regulation of cell motility](#)
- [Two distinct E3 ligases, SCF and HECW1, degrade thyroid transcription factor 1 in normal thyroid epithelial and follicular thyroid carcinoma cells, respectively.](#)
- [Histone acetyltransferase CBP promotes function of SCF FBXL19 ubiquitin E3 ligase by acetylation and stabilization of its F-box protein subunit.](#)
- [SCF E3 ligase F-box protein complex SCF\(FBXL19\) regulates cell migration by mediating Rac1 ubiquitination and degradation.](#)